

LOCATION ANALYSIS FOR WOMEN AND CHILDREN CENTERS IN ALACHUA COUNTY

TEAM MEMBERS:

JOSEPH HEATH

PETER BROWN

MATTHEW DYSKO

Goal

- To create three centers in Alachua County for children and teenage mothers under 16 years old.
- Center will be to support those subject to Domestic Violence, Abuse, and Child Neglect
- To be easily available to those not close to current centers

BACKGROUND

- Alachua County has more than 243,000 residents
- Home to the University in the State of Florida
- Of that 243,000 residents , 50,000 people live under the Federal Poverty Level (FPL), and 8,000 are children.
- With this large number of people, there is an average of 2,400 child neglect and domestic violence cases reported annually

BACKGROUND (Cont.)

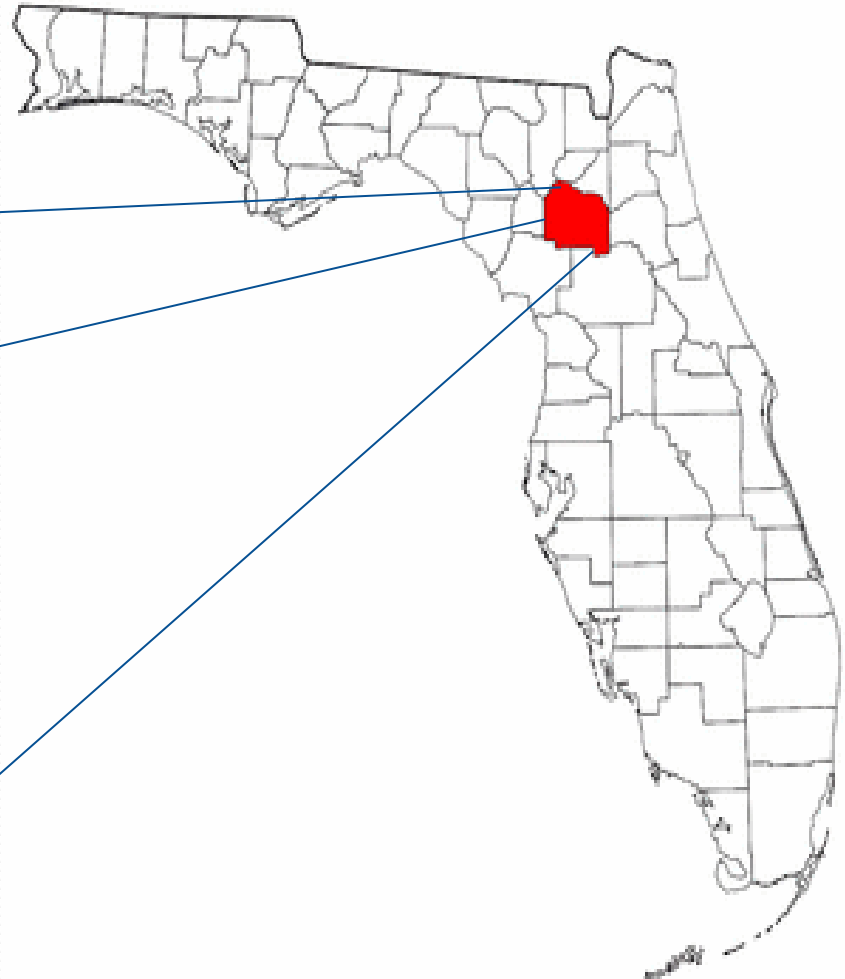
- The largest municipality in Alachua County is Gainesville
- Alachua County is made up of 51.0% Females and is 18.2% children under the age of 18
- The average household Income is \$42,980, this is 10% less than the Florida Average.
- Gainesville's crime index is 1.4 times the National Average

Parameters

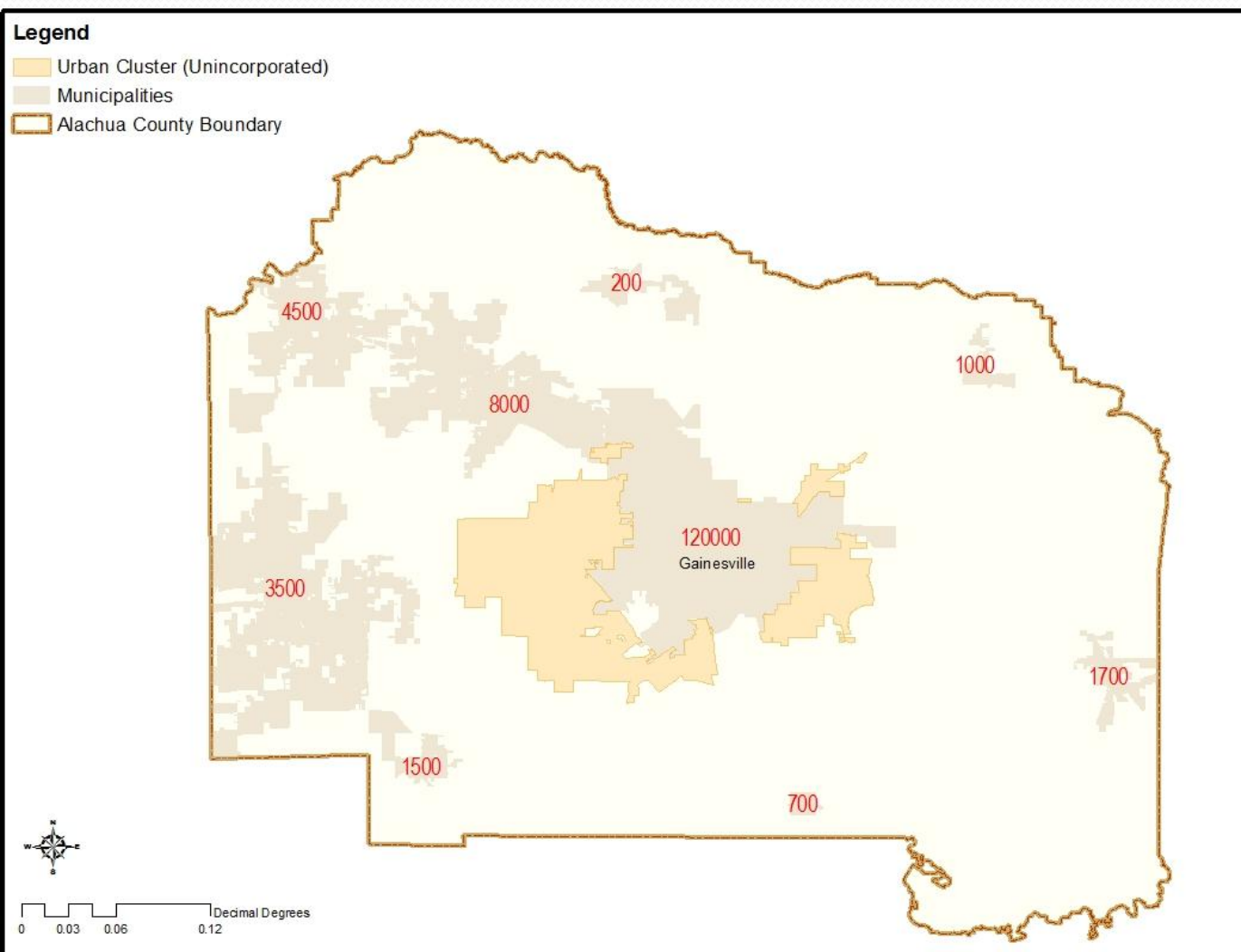
- Must be in area of high population so that it receives the most use
- Ease of access from schools and bus stops
- Near areas with large quantities of domestic violence and abuse and no support center
- Grounds must be large enough to support such a facility
- Cost must be feasible for public funding
- Must not interfere with conservation areas

Municipalities

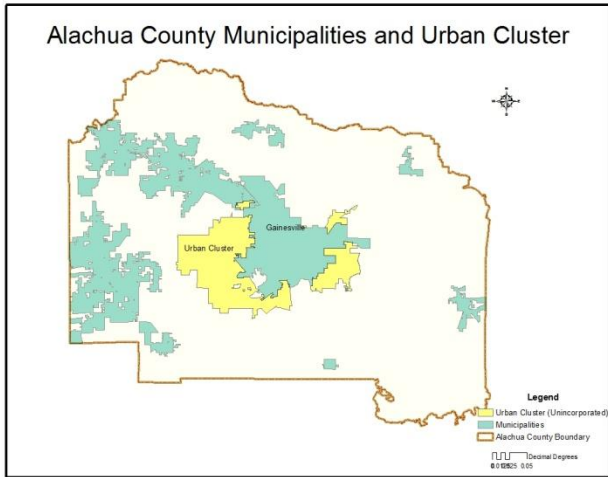
- 9 Municipalities
- Borders 8 counties
- Located in North Central FL



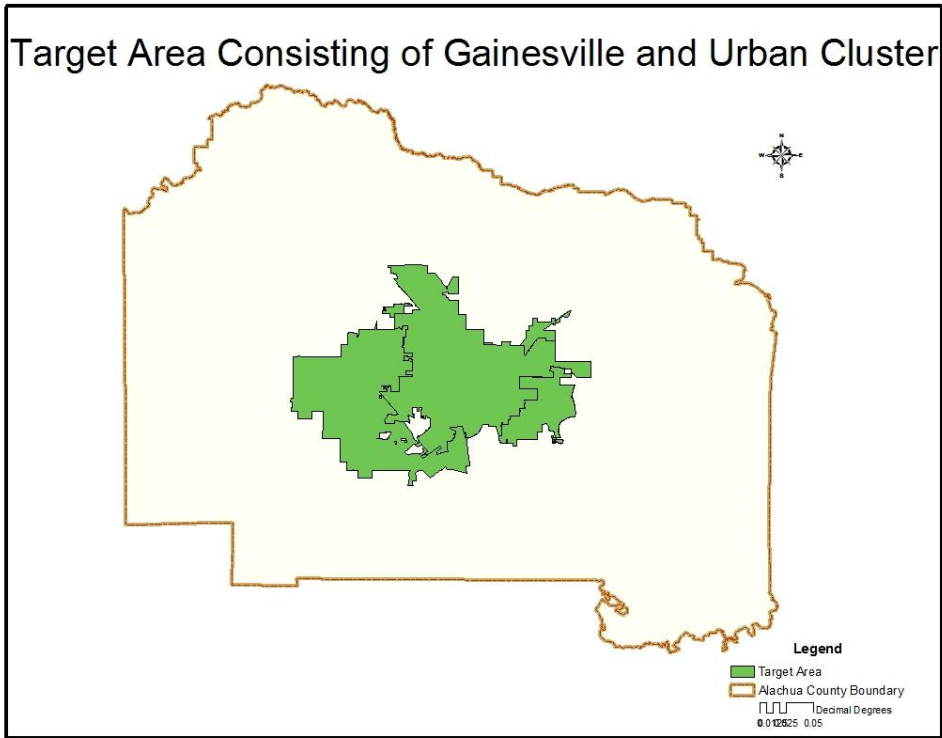
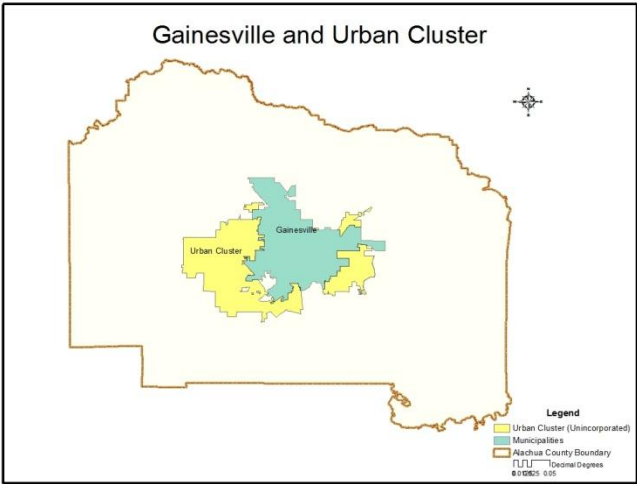
Municipalities by Population (rounded to nearest hundred)



- Based on the large population density and the surrounding urban cluster, we decided to focus on placing the 3 centers in that area alone.



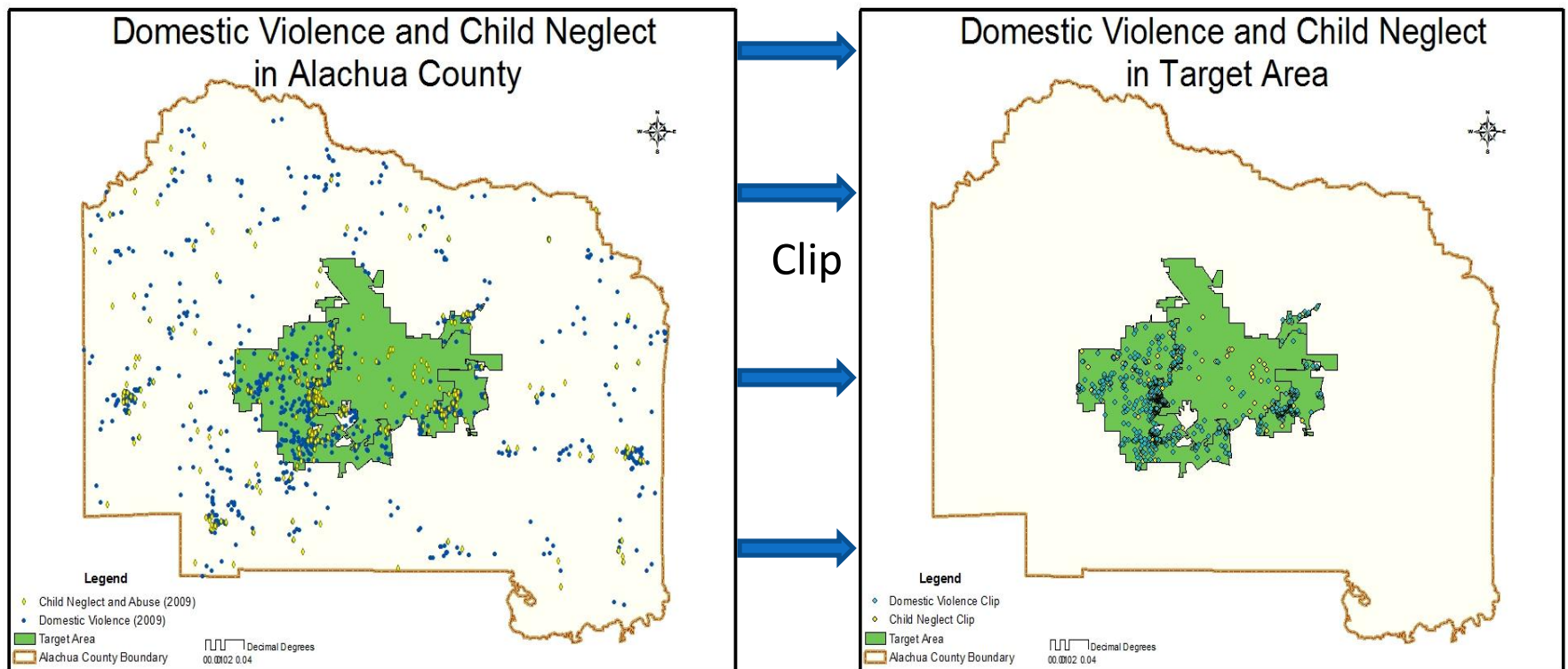
Definition Query



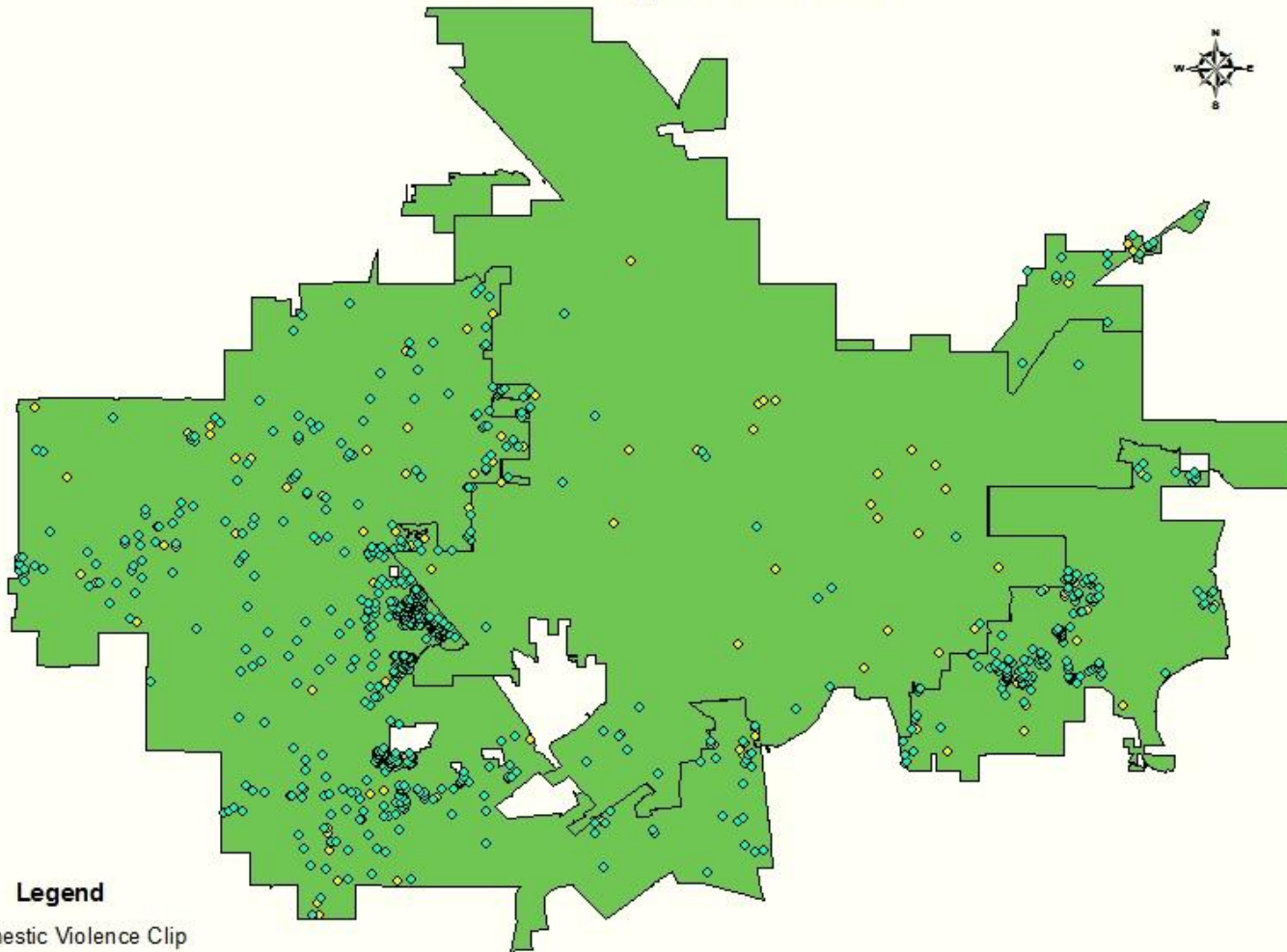
Merge Gainesville and Urban Cluster to form Target Area

Targeting Domestic Violence and Child Neglect

- To limit domestic violence and child neglect to just the defined area (consisting of Gainesville and its urban cluster) the clip function was used



Domestic Violence and Child Neglect in Target Area



Legend

◆ Domestic Violence Clip

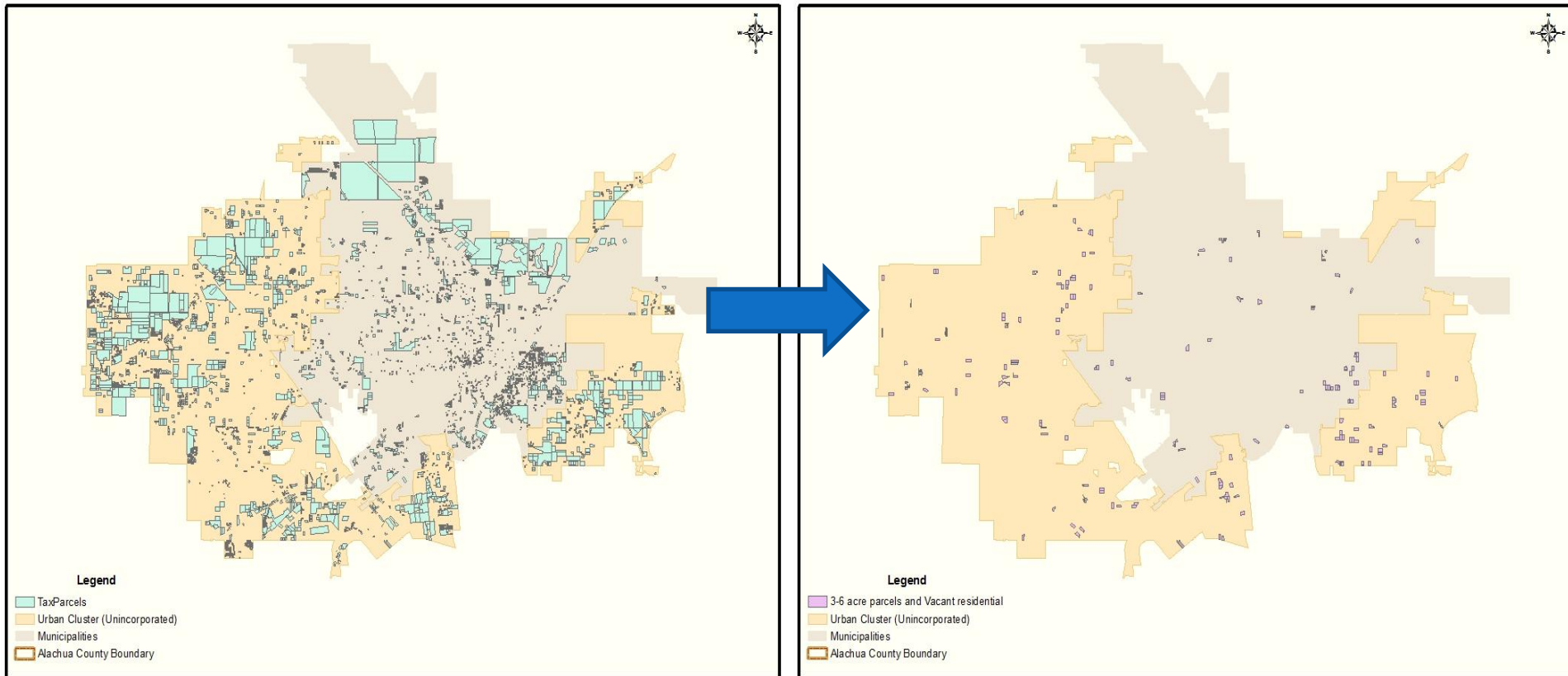
◆ Child Neglect Clip

■ Target Area

▭ Alachua County Boundary

Decimal Degrees
0.000001 0.02

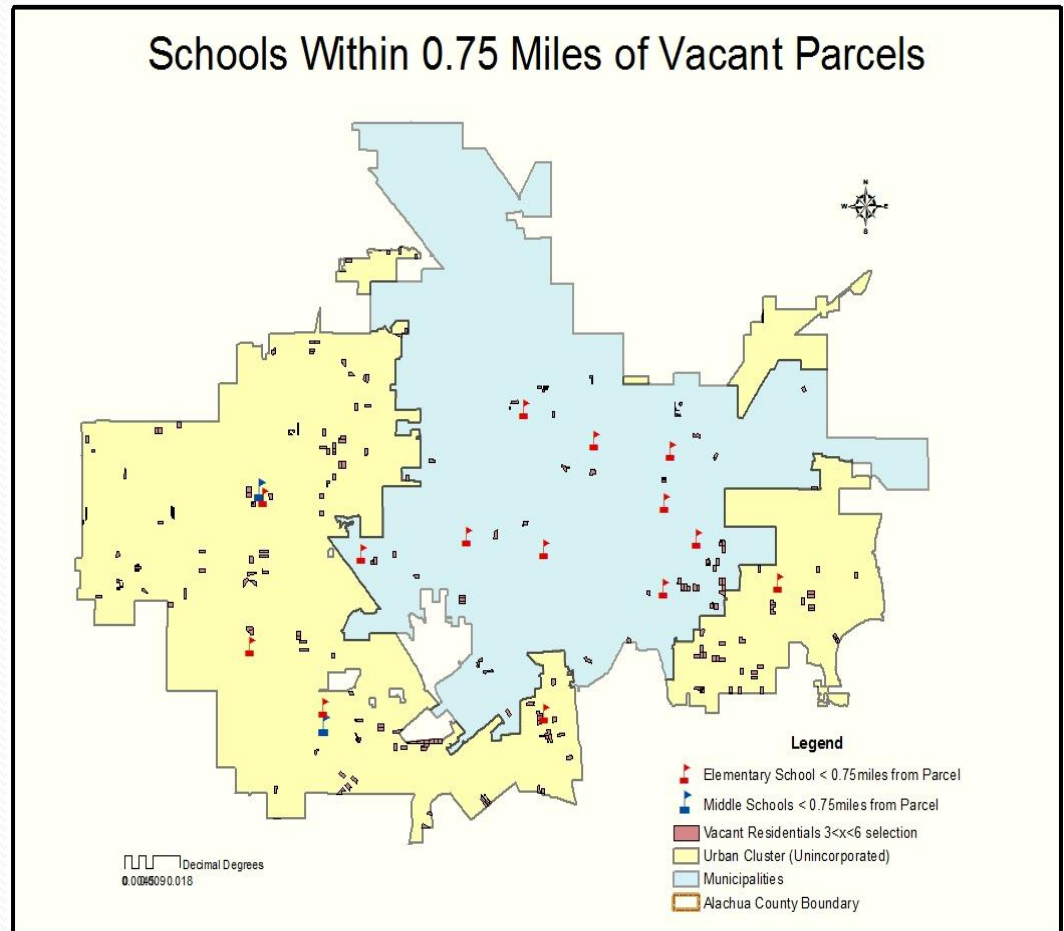
Definition Query for Parcel Size



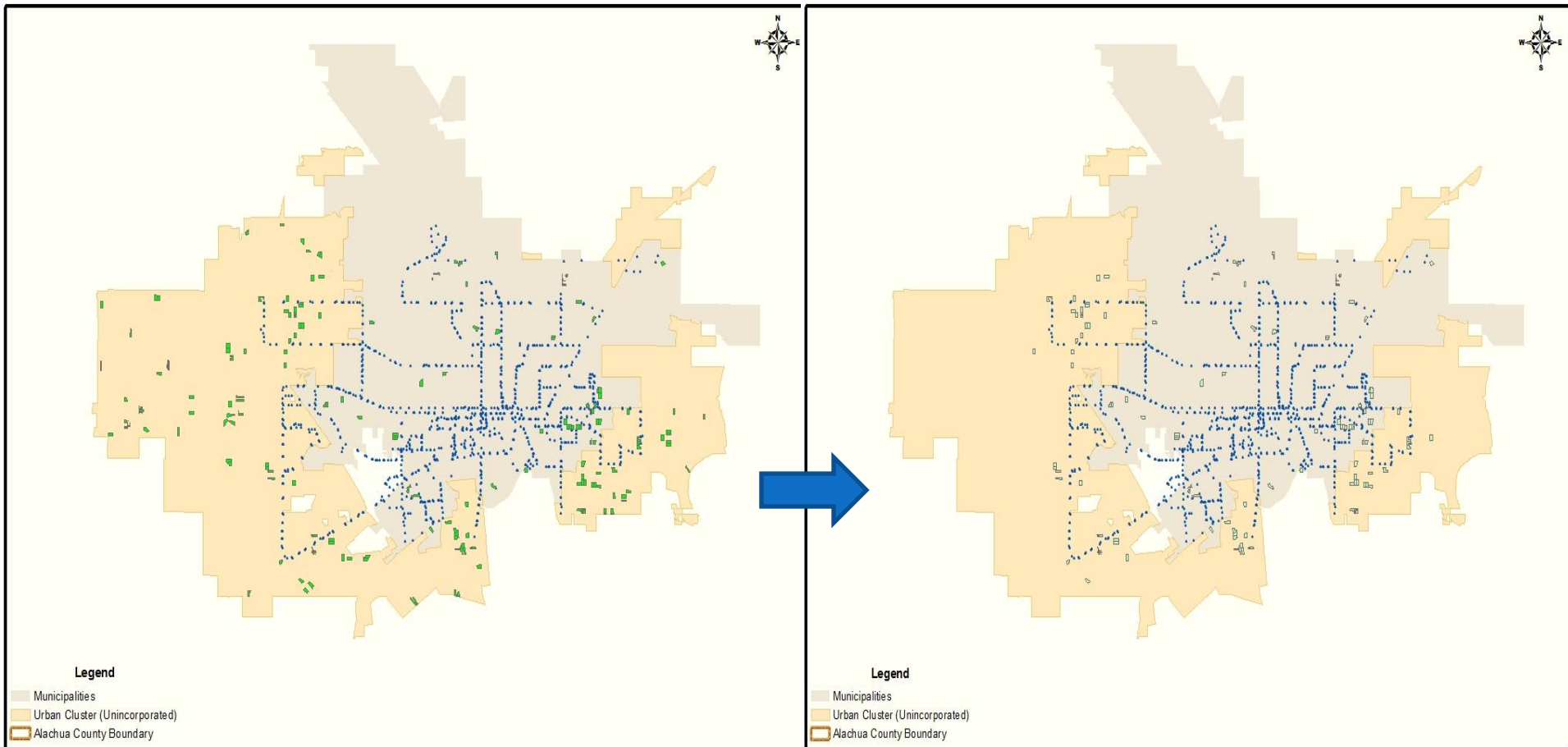
- We decided that a parcel size that would be big enough for such a center would be at minimum 3 acres and to be cost effective not be larger than 6 acres

Consideration of Schools

- We want the planned community centers to be close to schools
 - Selection of elementary and middle schools within 0.75 miles of vacant parcels
 - 0.75 miles is estimated to be about a 15 minute walk
- After the selection, we are left with 14 elementary schools and 2 middle schools



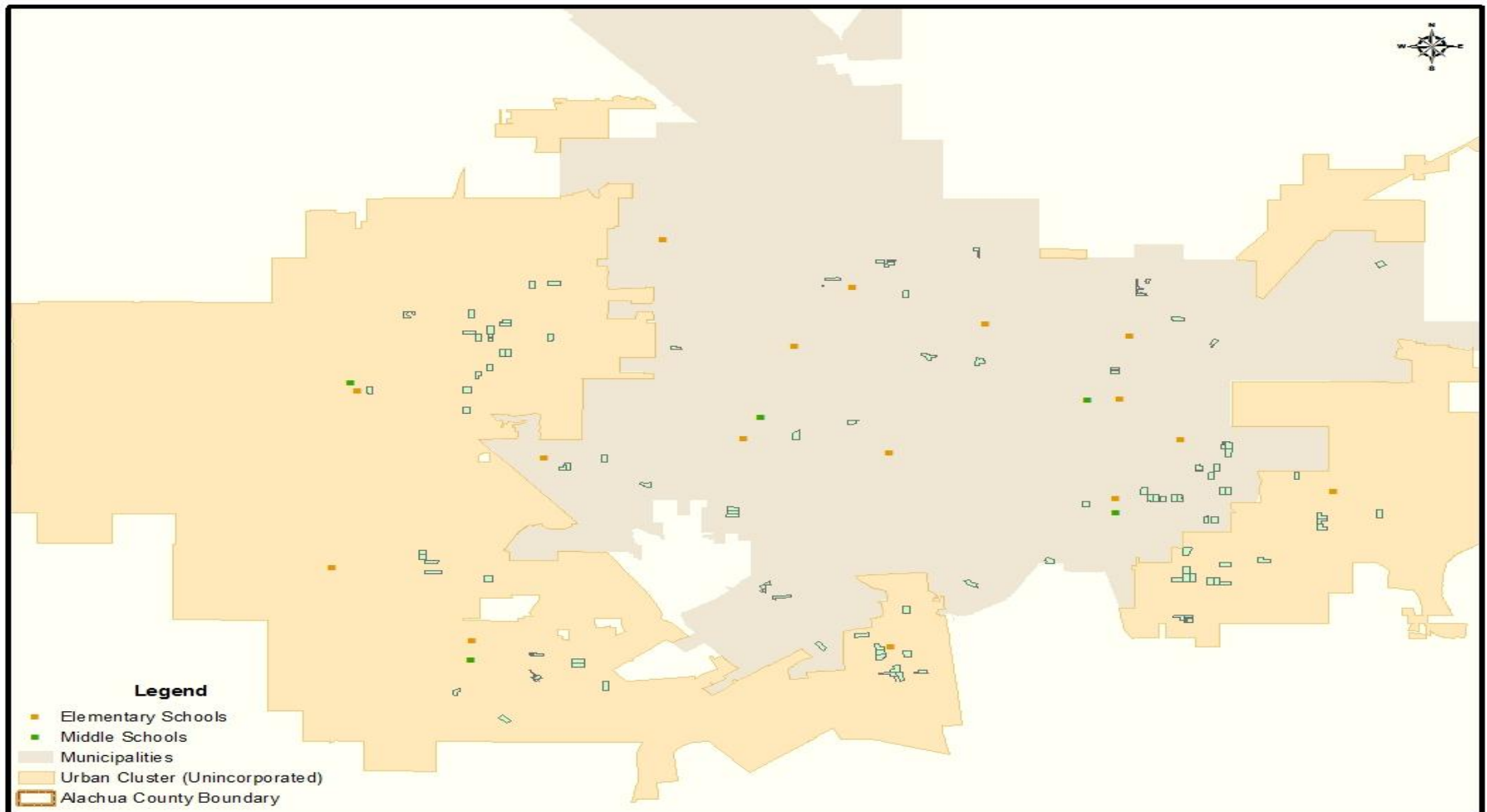
Buffering Parcels to 0.5 mi from Bus Stops



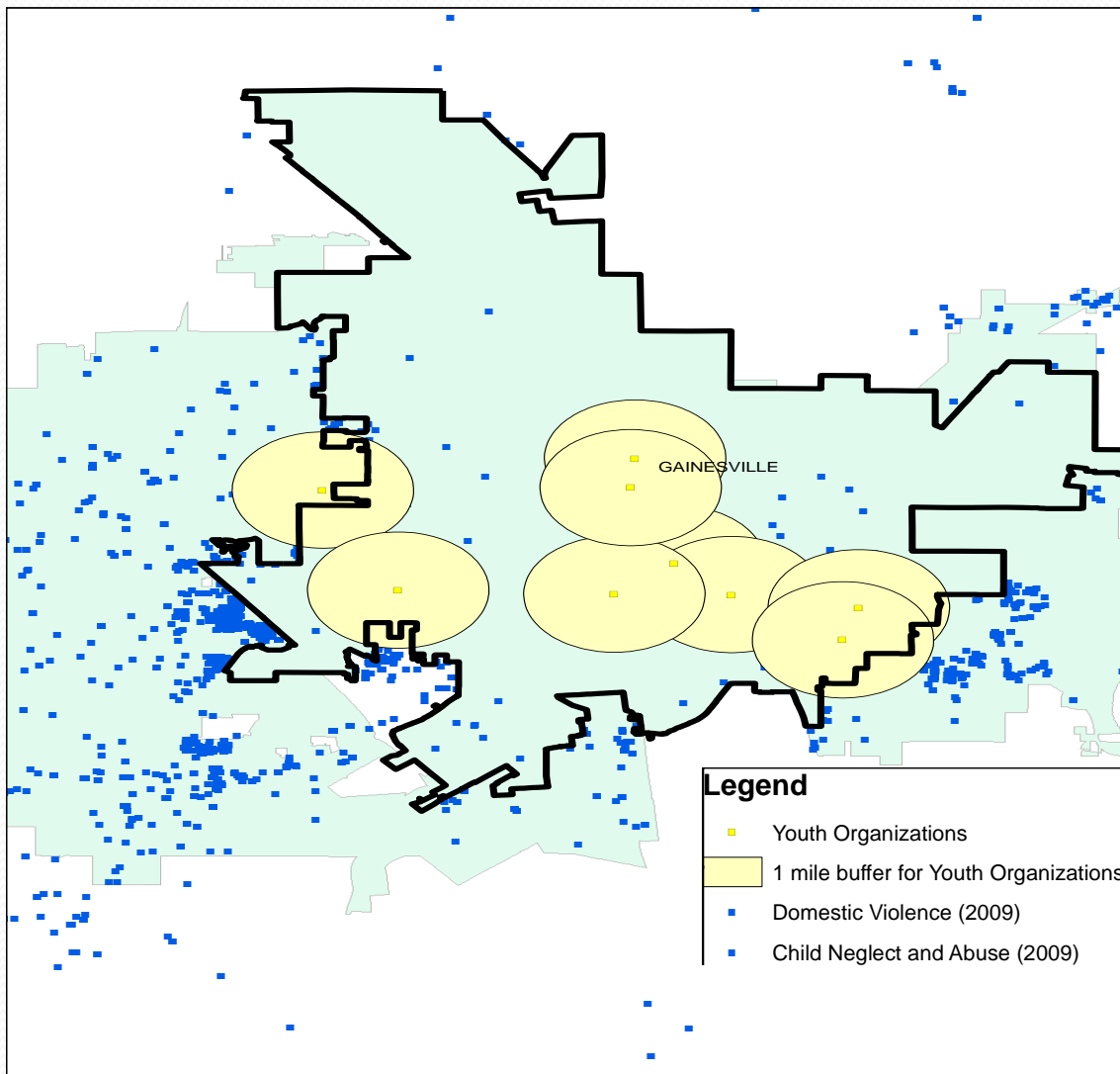
- For greater accessibility to children, our team concluded that the center should be no more that 0.5 miles from a bus stop

Parcels Remaining

These are the parcels left after the proceeding considerations were accounted for and there proximity to schools

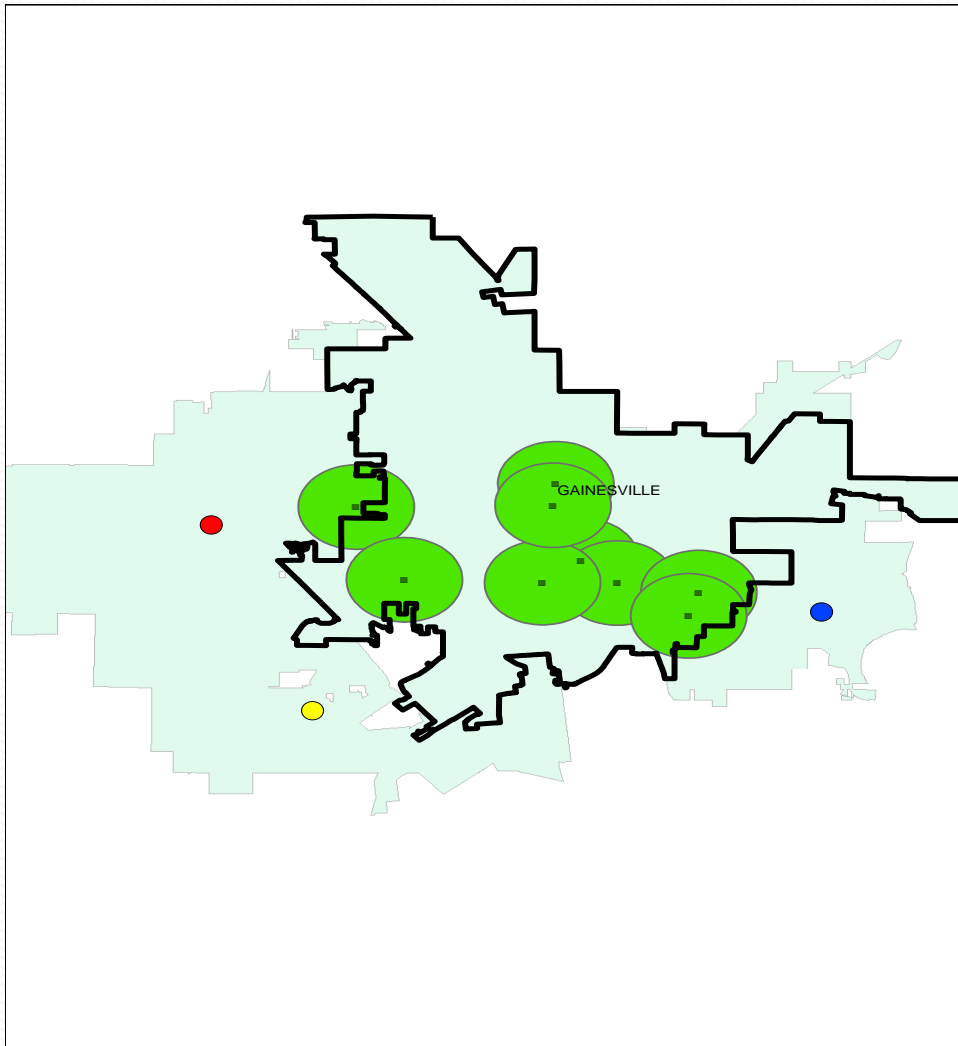


Youth Organizations vs. Domestic Abuse and Child Neglect



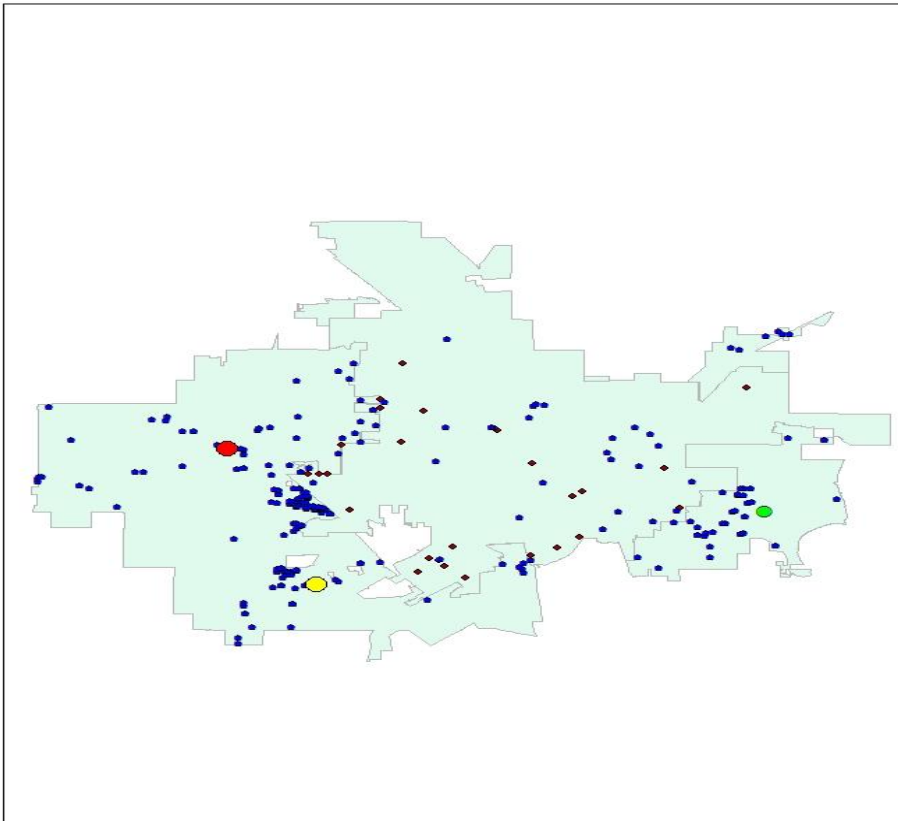
- With this map we wanted to make sure that we were not placing these centers too close to any similar centers that were already in operation.

Locations vs. Existing Youth Org.



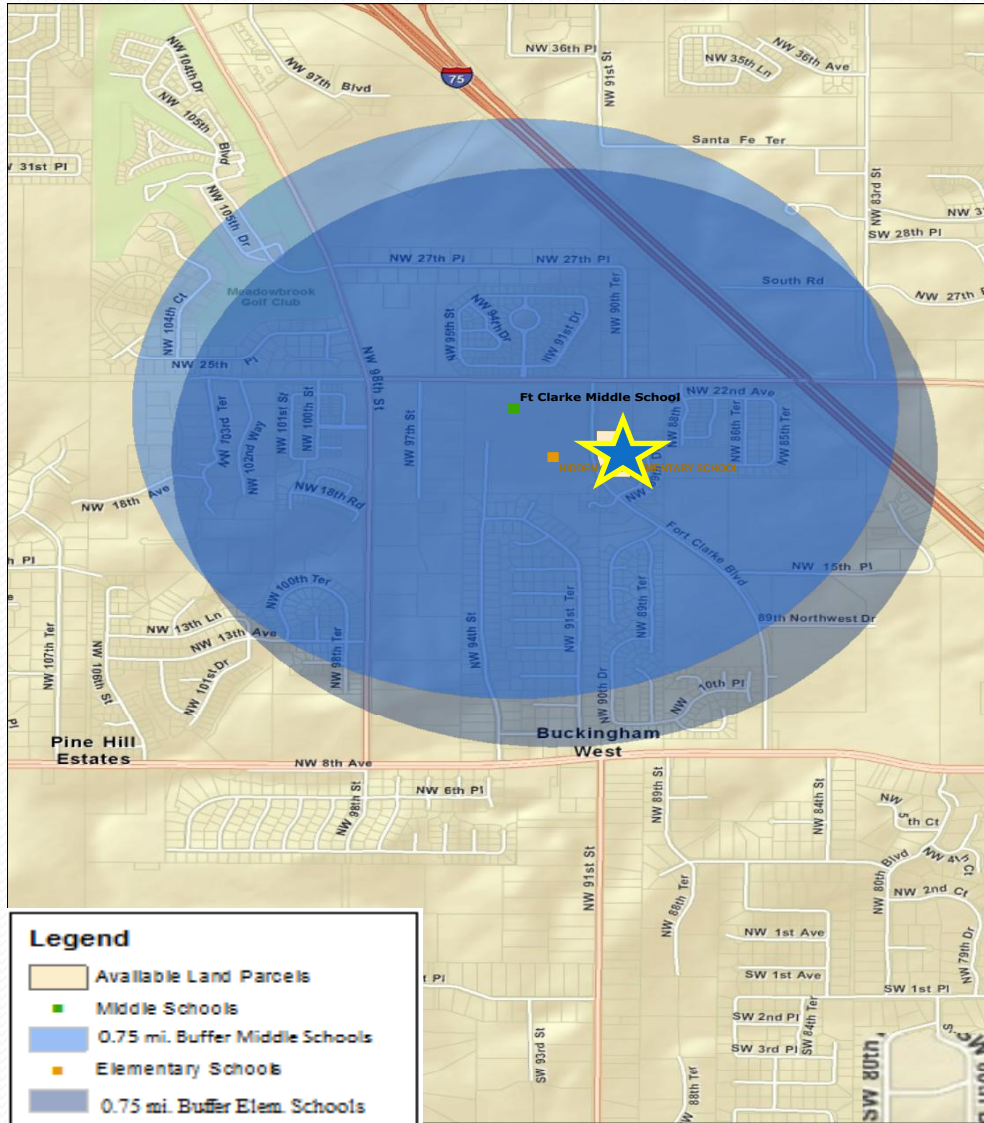
- Here you can see the three chosen locations and they are located further than a mile from an existing center.

Locations Compared to Child Neglect and Domestic Violence



- This shows our 3 locations and their proximity to dense domestic violence and child neglect areas

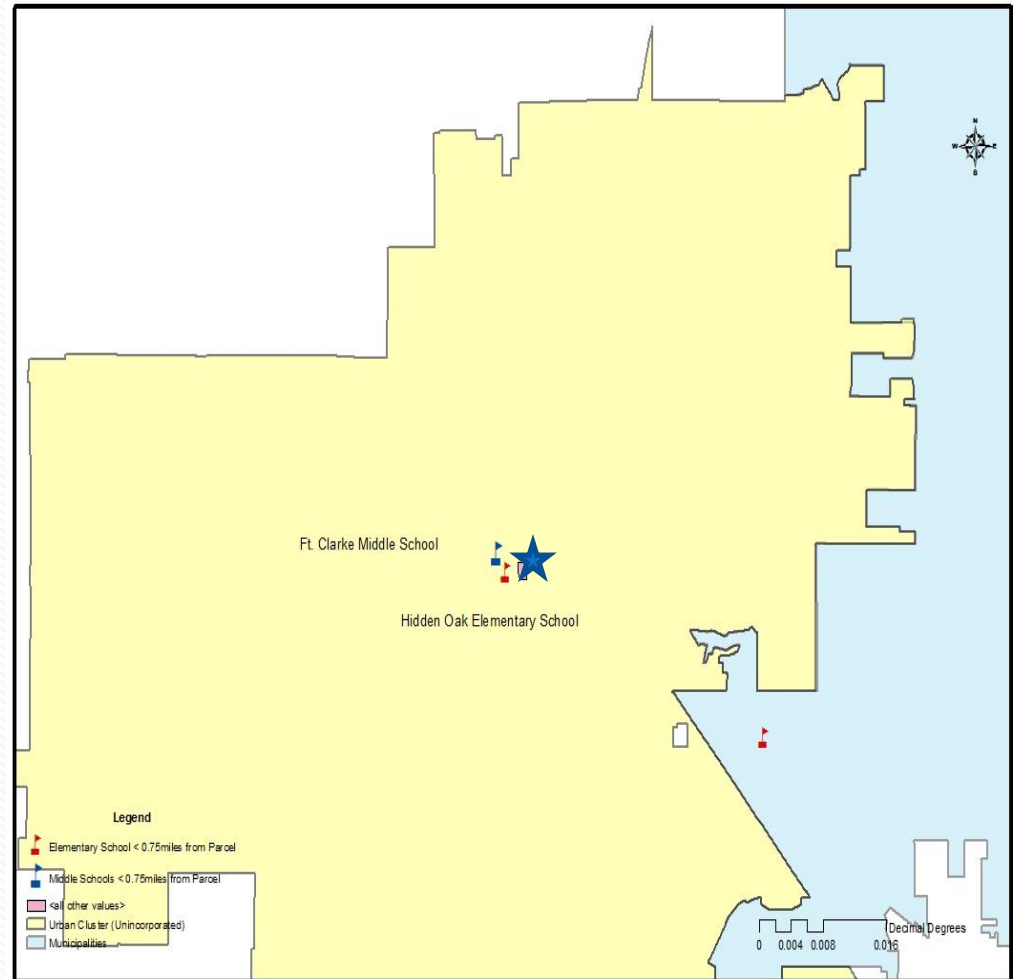
NW Location (Fort Clarke)



- This shows a 0.75 mile buffer around Fort Clark Middle School and Hidden Oak Elementary School. The chosen parcel is within both buffers

Northwest Location

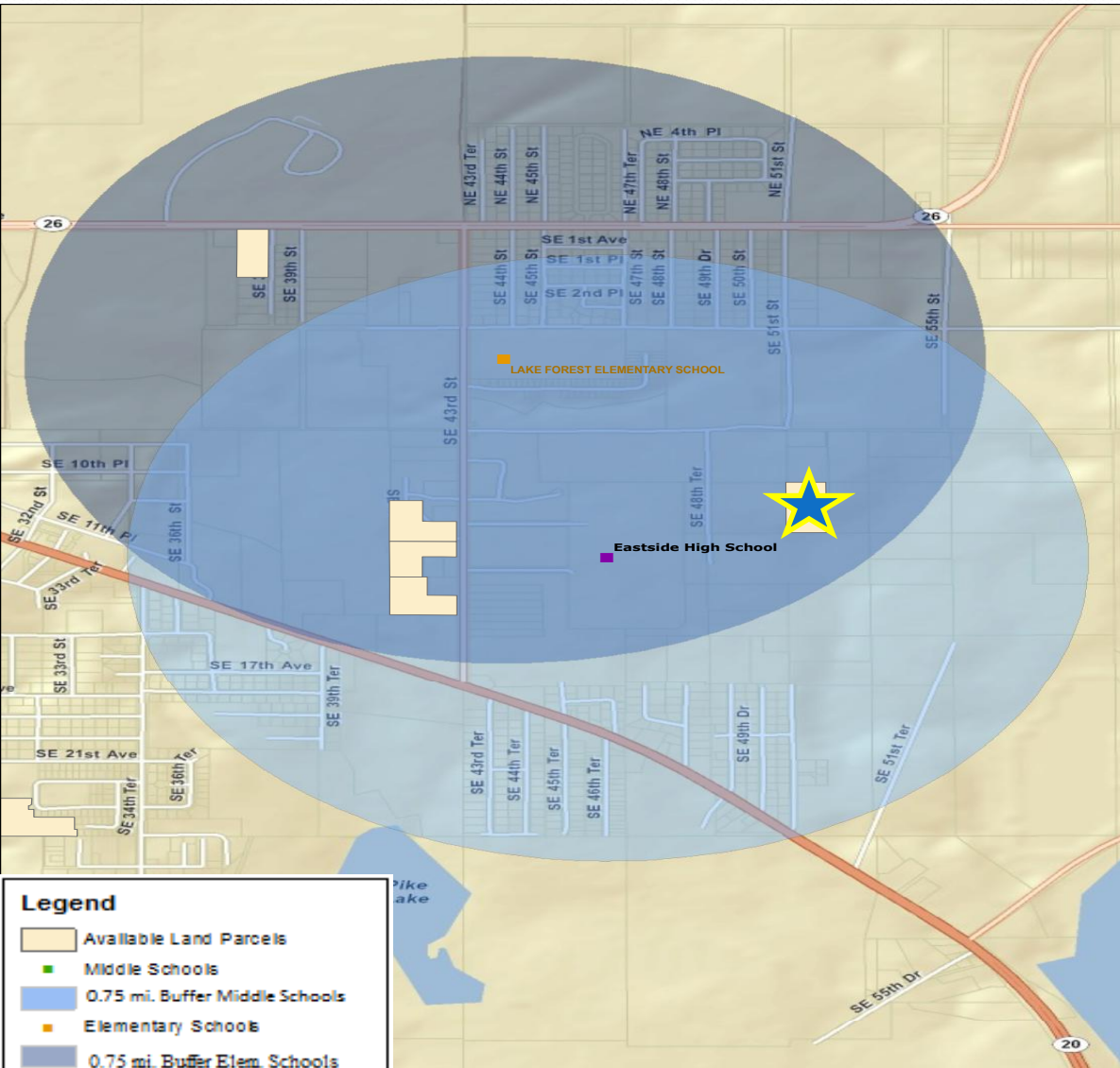
- Address: 2127 Ft. Clarke Blvd
- Location: 29.671290, -82.438502 degrees
- 4.95 acres
- Only 0.2 miles from Wiles Elementary and Ft. Clarke Middle Schools



Center in NW Gainesville



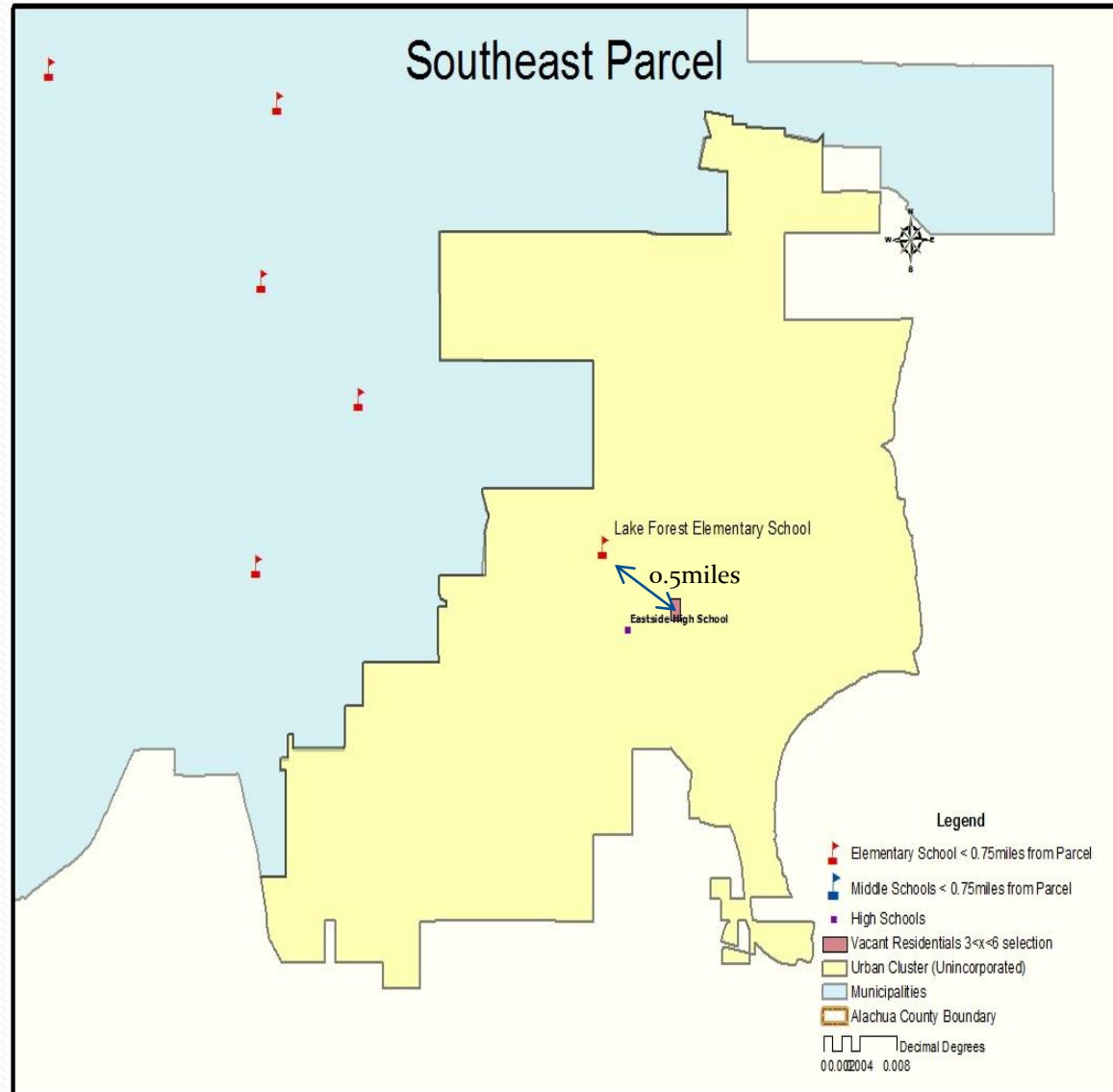
SE Location



This shows a 0.75 mile buffer around Lake Forest Elementary and Eastside High. The chosen parcel is within both.

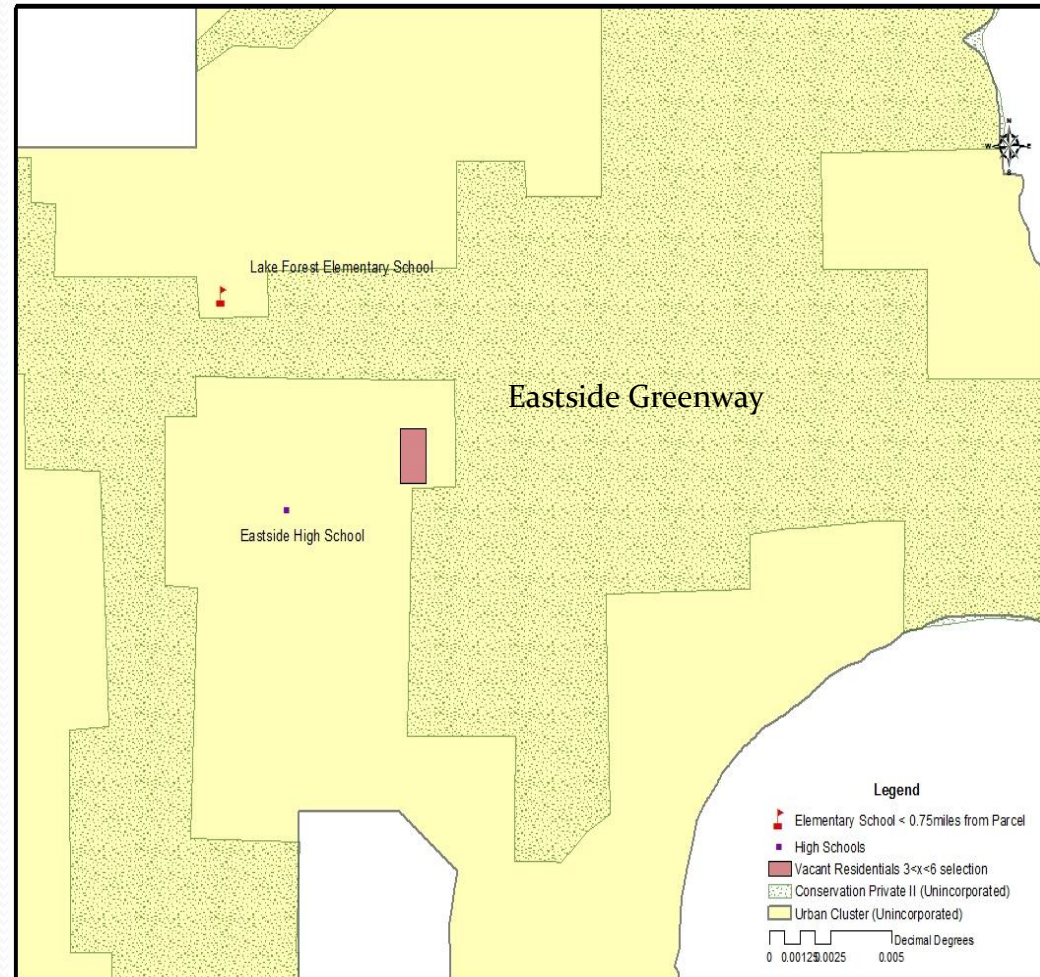
Southeast Location

- Address: 1031 SE 51st Street
- Coordinates: 29.642222, -82.263489 degrees
- Within 0.5 miles of Lake Forest Elementary School
 - 0.3 miles to Eastside High School

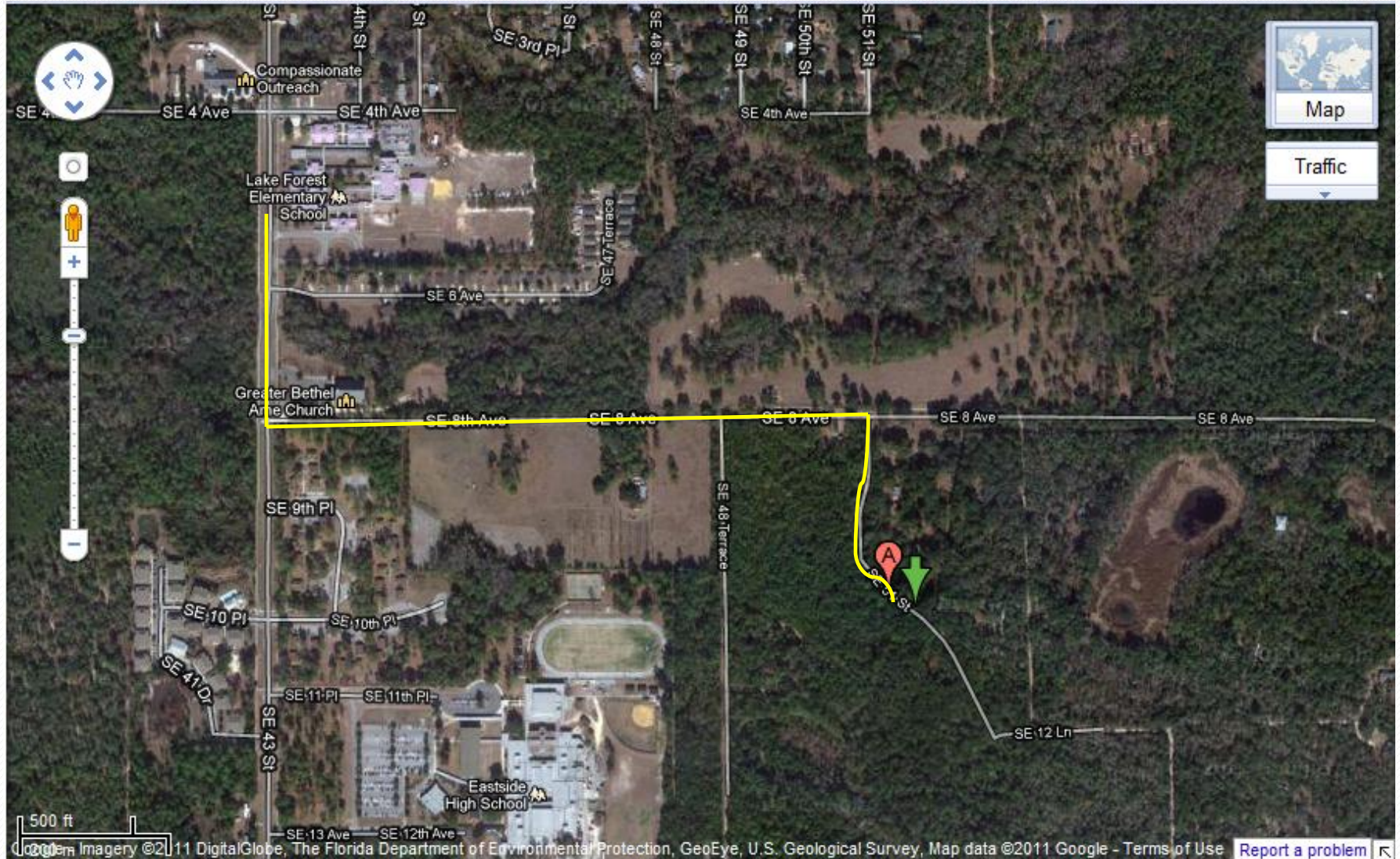


SE Parcel's Proximity to Conservation Area

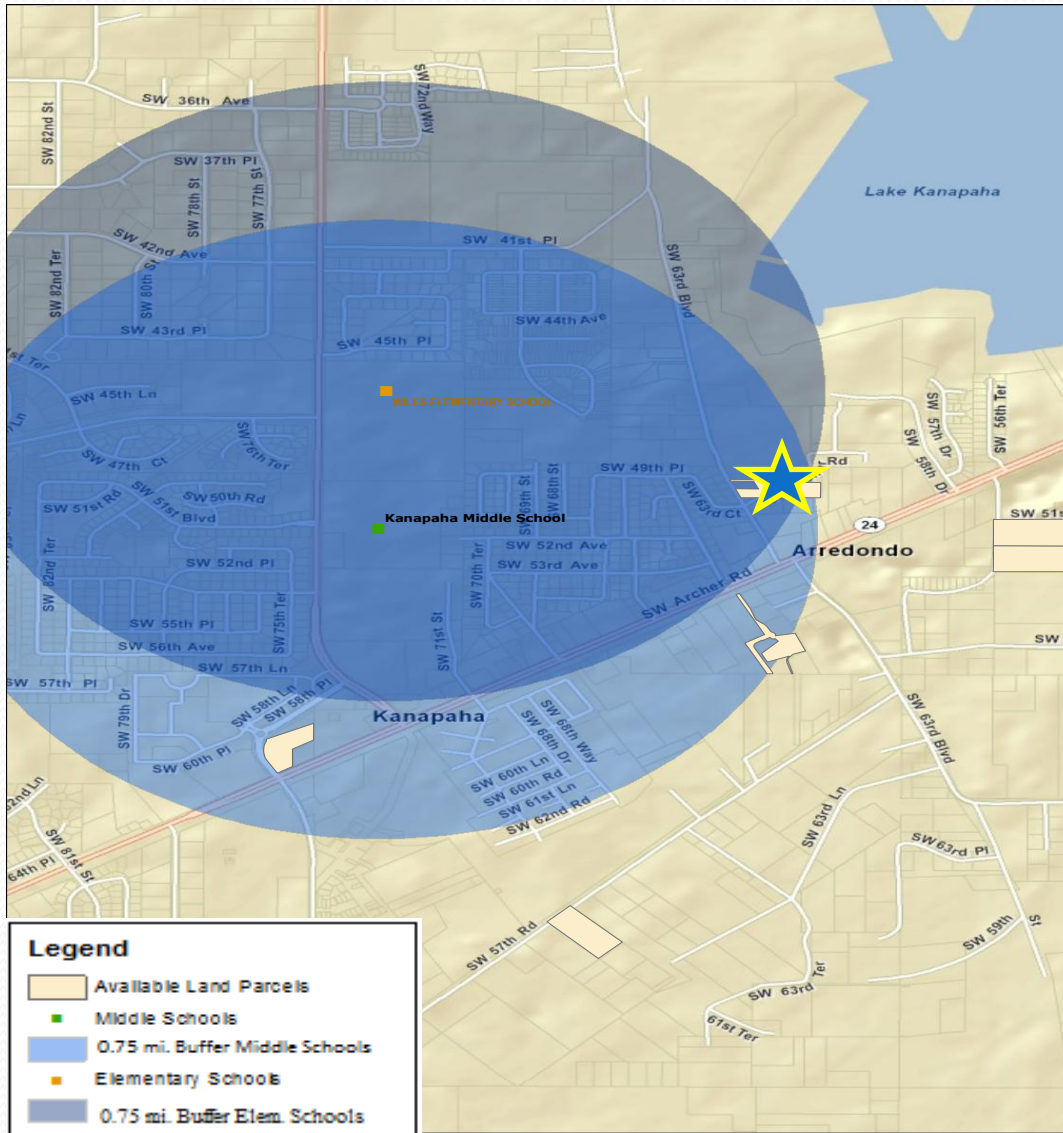
- It is important to ensure that the parcel does not lie within conservation areas
- The selected parcel lies close to, but not within the Eastside Greenway
- The Eastside Greenway provides upland and wetland habitats for threatened and endangered wildlife



SE Parcel: Aerial View



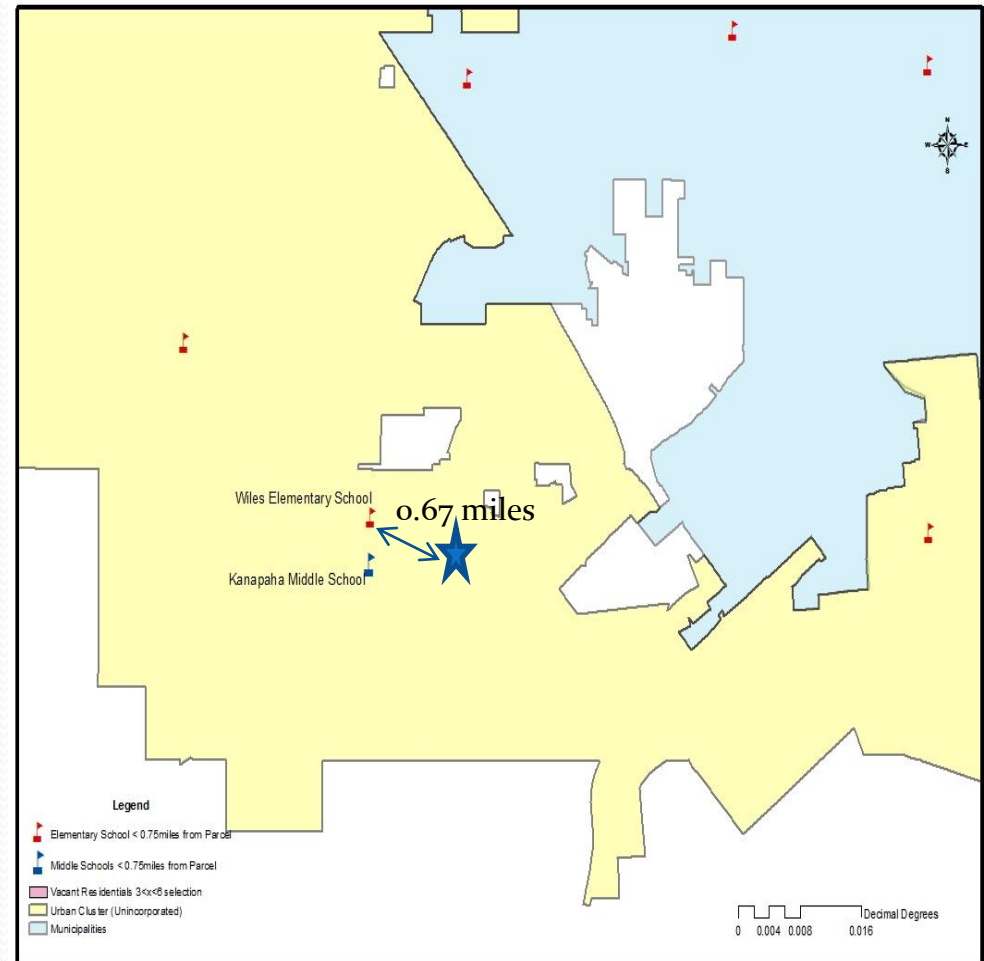
SW Location (Kanapaha)



- This shows a 0.75 mile buffer around Kanapaha Middle School and Wiles Elementary School. The chosen parcel is within both buffers.

SW Location

- Location: 29.607982, -82.409056 degrees
- 3.31 acres
- Only 0.67 miles from Wiles Elementary



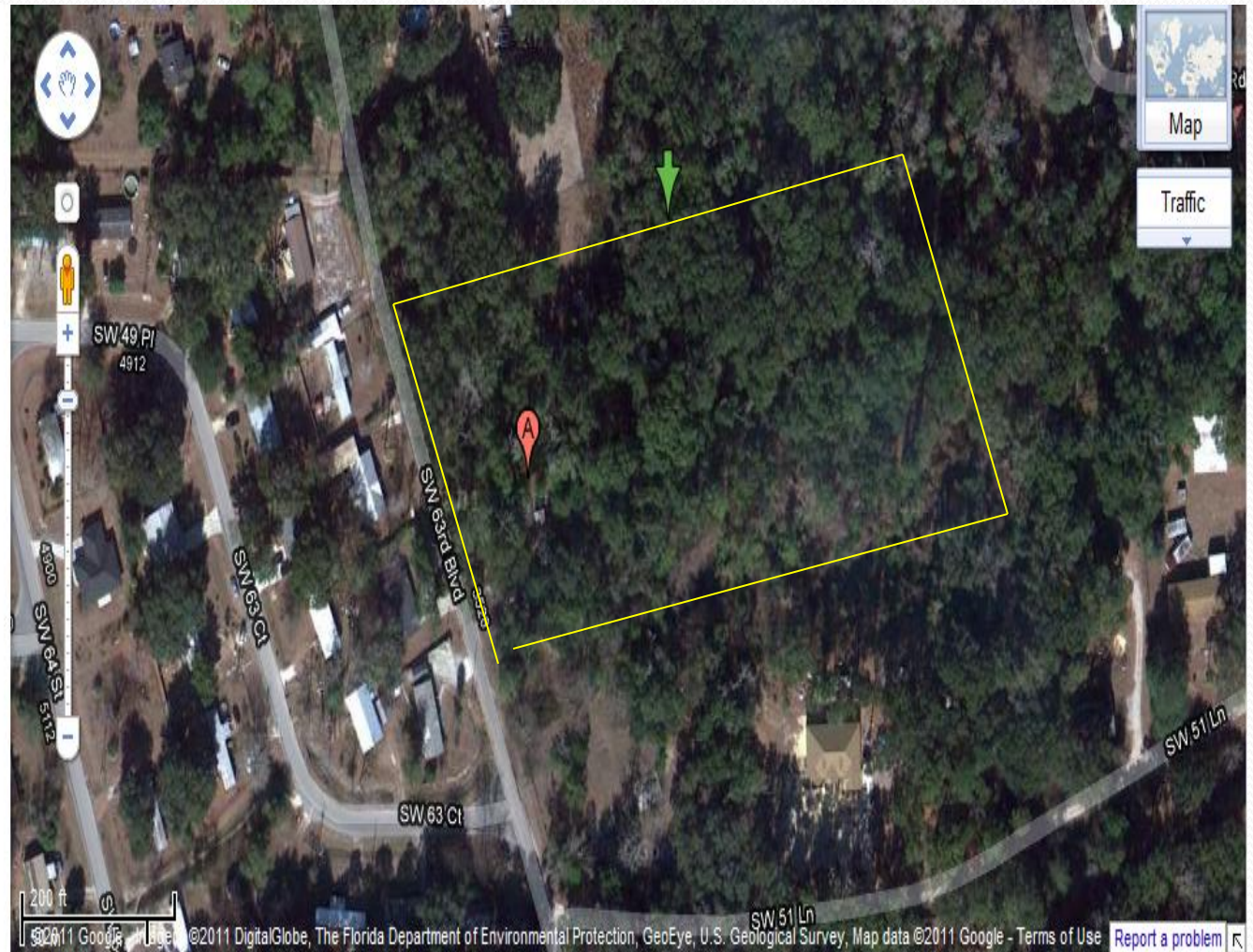
Center in SW Gainesville



4929 SW 63rd Blvd

Gainesville, FL 32608

[Directions](#) [Search nearby](#) [more](#) ▼



Conclusion

- Chose three locations
 - Eastside (SE Location)
 - Fort Clarke (NW Location)
 - Kanapaha (SW Location)
- Locations chosen based on
 - Domestic violence and abuse
 - Current center locations
 - Proximity to schools and Public Transit
 - Appropriate land size



Questions?